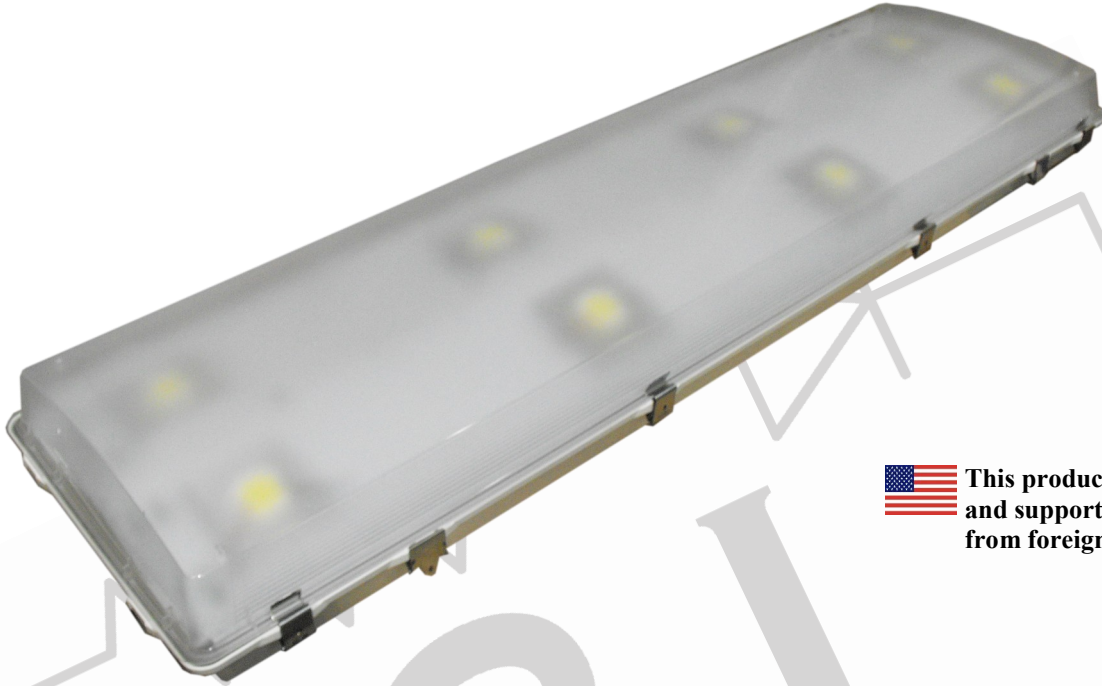


Project Name:	Location:	Date:	Qty:
Fixture Type:	Prepared by:	Comments:	

NEW — The WLB Low Bay uses 6 to 10 high-powered LED chip with different diffusers making it perfect for many lighting applications. One of the most efficient and cost effective LED Low Bays out on the market.



**This product is designed, assembled, and supported in the USA. Made from foreign and domestic parts.**

## Specifications

### LED Module:

- Custom High Brightness White Array
- Patented Phosphor and packaging Technology
- Lumen Degradation(L<sub>70</sub>): > 80,000 hrs
- No UV, Infrared Emission
- Luminous Efficacy: > 110 lm/W @ 25 °C
- CCT: 4500 K to 5000 K
- CRI: > 75 Ra

### LED Driver Module:

- Input Voltage: AC 100 V to 277 V, 347 V, 480 V
- Power Factor: > 95%
- Power Efficiency: > 85%
- THD: < 18%
- Lifespan: > 100,000 hrs @ 80 °C internal temp
- IP Rating: IP67
- Patent Pending

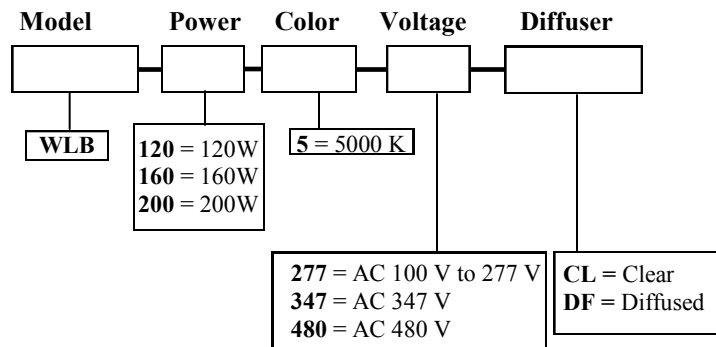
### Luminaire:

- \*Total Wattages: 120W(136W), 160(176W), 200W(220W)
- Minimum 10,000 lumen output
- 70+ lm/w total fixture efficacy
- Ambient Operating Temperature: -30 °C to 60 °C
- Weight: 15lbs
- Mounting Height: 10 ft to 30 ft
- Replaces up to 1000 W Low Bay
- Controllability: Instant On/Off
- Photo or Occupancy sensor options
- Longer life than incandescent, fluorescent, and HID
- High shock and vibration resistance
- In accordance to CE, UL, cUL, and ETL, cETL, RoHS testing standards
- Environmentally Friendly: No lead, mercury, argon, xenon or other unsafe materials

5 Year Labor and Part Warranty against manufacturer defect is provided to use under normal operating condition. Proof of purchase must be provided when warranty service is requested. Notice that improper use or unauthorized repair will not be covered by the warranty. S3J Electronics reserves the right to make changes to this document and to the product without notice. \*Fixture wattage may vary from 1% to 2%.

# WLB LED Low Bay

## Ordering Information



## Dimensions

